

VISION

FULL LIGHTING RANGE
INCLUDING THE WIRELESS CHARGING RANGE + NEW PRODUCTS



VISION

A PRODUCT RANGE THAT OUTSHINES THE COMPETITION.

At our core is a product range that is based on unrivalled portable battery powered lighting for professionals in all areas of industry.

No matter which VISION product you choose, inspection lights, head torches or heavy-duty work lights, you can be assured that you will be using a product that has been designed to make your life easier and more productive in the working environment.

With our continued investment in LED lighting technology and the advancement of COB (Chip on Board) we remain at the forefront of the lighting industry.



CONTENTS

	ETL60 - 300lm Focus Control Rechargeable Penlight - - - - 4	
	ETL61 - 1500lm+ Focus Control Pro Rechargeable Torch - - - 6	
	ETL202 - 300lm Flexible LED Neck Torch - - - - - 8	
	EHL306 - Flexi-Twist Magnetic Hand Lamp/Torch - - - - - 10	
	EHL304 - High CRI 95+ LED Inspection Light + Charging Dock 12	
	EHL1010 - Multi Position 40 SMD LED Under Bonnet Lamp - - 14	
	EHL1000 - 10W Multi Position COB LED Inspection Lamp - - 16	
	EHL300 - SMD Flexible Magnetic Hand Lamp/Torch - - - - - 18	
	EHL301 - SMD Compact Hand Lamp & UV Torch - - - - - 20	
	EHL305 - COB Slimline Inspection Lamp/Torch- - - - - 22	
	EHL302 - COB Hand Lamp & Charging Dock - - - - - 24	
	EHL303 - COB Slimline Inspection Lamp & Torch - - - - - 26	
	ETL201 - 350lm LED Motion Sensor Head Torch - - - - - 28	
	EWL100 - Zoom Focus LED Mini Work Light - - - - - 30	
	EWL102 - COB Heavy Duty Work Light & Powerbank- - - - - 32	
	EHLW400 - Wireless Fast Charging Pad - - - - - 34	
	EHLW410 - 1000LM COB Compact Spot Light - - - - - 36	
	EHLW420 - 1000LM COB Slim Inspection Lamp - - - - - 38	
	EHLW430 - 900LM LED Adjustable Beam Torch - - - - - 40	
	EHLW440 - 1500LM COB Work Lamp/Flex Light - - - - - 42	



300lm Focus Control Rechargeable Penlight

The VISION Focus Control Rechargeable Penlight is a compact yet powerful tool, perfect for precision lighting in a variety of situations. This penlight is equipped with a 3W LED, delivering a maximum output of 300 lumens. Its intuitive switch sequence allows for seamless cycling through different modes: 100% brightness (300lm), 50% brightness (150lm), 10% brightness (100lm), and an SOS mode for emergencies, making it a versatile tool for both professional and personal use.

One of the standout features of the VISION Focus Control Rechargeable Penlight is its rotation focus with an adjustable beam. This functionality enables users to easily switch between a wide floodlight for broad illumination and a focused spotlight for detailed work, providing adaptability for any task.

Powered by a reliable 3.7V 600mAh Li-ion battery, the penlight offers impressive operating times: 3 hours at 100% brightness, 6 hours at 50% brightness, and a

remarkable 12 hours at 10% brightness. The penlight can be fully charged in just 3 hours using the included 1m USB-C to USB-A charging cable, ensuring minimal downtime and maximum efficiency.

The VISION Focus Control Rechargeable Penlight is designed for convenience and portability. Its sleek, pen-like design allows it to be easily carried in a pocket or toolbelt, making it an ideal companion for inspections, repairs, and everyday tasks. The durable construction ensures that it can withstand the rigours of regular use, while the powerful LED and adjustable focus make it a highly functional lighting solution.

In summary, the VISION Focus Control Rechargeable Penlight is a reliable, versatile, and efficient lighting tool that delivers exceptional performance in a compact form. Whether for professional use or everyday carry, this penlight is an essential addition to your toolkit.



LED light:	3W LED
Battery type & parameter:	High quality 3.7V 600mAh Lithium battery
Charging time:	3 hrs
Charging port:	USB-C
Protection class:	IP65, IK08
Switch dimming:	100% / 50% / 10% / SOS
Net weight:	72g

Dimensions:	Wide Beam: W: 157mm x D: 20 mm Narrow Beam: W: 165mm x D: 20
Accessories:	1m USB-C to USB-A charging cable. Optional 3-Pin USB-C Adaptor (EHLPT)
Operation Time:	100% Beam: 300lm – 3 hours 50% Beam: 150lm – 6 hours 10% Beam: 100lm – 12 hours
Input:	Charger: 100-240Vac Lamp: 5V Max. 2A
Material:	Aluminium

PART NO	DESCRIPTION	QTY
ETL60	300lm Focus Control Rechargeable Penlight	1



TOUCH & CLICK PUSH BUTTON
100% / 50% / 10% / SOS



HIGH QUALITY 3.7V 600MAH
LITHIUM BATTERY



USB C CHARGING

VISION ETL61

NEW TO THE RANGE

1500lm+ Focus Control Pro Rechargeable Torch

The VISION Focus Control Pro Rechargeable Torch is a powerful and versatile hand torch designed for a wide range of applications. Equipped with a 20W Cree XHP50.2 LED, this torch delivers a robust light output that meets the demands of any situation. The torch features an intuitive switch sequence, allowing users to toggle between 100% (1200lm), 50% (600lm), and 10% (100lm) brightness levels, catering to different lighting needs.

For emergencies, the VISION Focus Control Pro Rechargeable Torch includes a double-press SOS mode, ensuring you are always prepared. Additionally, a press and hold of the button for 2 seconds activates a 1500lm boost mode, providing extra illumination for approximately 40 seconds. The torch's rotation focus allows for an adjustable beam, giving you control over the light spread and focus, whether you need a broad floodlight or a concentrated spotlight. Charging the VISION Focus Control Pro Rechargeable

Torch is convenient with the included 1m USB-C to USB-A charging cable, achieving a full charge in just 5 hours. For added flexibility, the torch comes with a carrying strap and an additional AAA battery case. This feature allows you to power the torch with standard AAA batteries (not included) if needed, ensuring you are never left in the dark.

The operating times of the VISION Focus Control Pro Rechargeable Torch are impressive, with a runtime of 3 hours at 100% brightness (1200lm), 6 hours at 50% brightness (600lm), and an extended 12 hours at 10% brightness (100lm). This makes it ideal for extended use in various settings, from outdoor adventures to professional work environments.

With its combination of high performance, adjustable focus, and versatile power options, the VISION Focus Control Pro Rechargeable Torch is an essential tool for anyone needing reliable and powerful illumination.

- 1500 LUMENS
- 12HR BATTERY LIFE
- 5HR CHARGE TIME
- IP65 RATING

- USB-C CHARGING
- 3xAAA FACILITY

LED light:	20W Cree XHP50.2 LED
Battery type & parameter:	High quality 3.7V 4000mAh Lithium battery
Charging time:	5 hrs
Charging port:	USB-C
Protection class:	IP65, IK08
Switch dimming:	100% / 50% / 10% / SOS
Net weight:	220g

Dimensions:	Wide Beam: W: 140mm x D: 35 Narrow Beam: W: 155mm x D: 35
Accessories:	1m USB-C to USB-A charging cable. Optional 3-Pin USB-C Adaptor (EHL P1)
Operation Time:	100% Beam: 1200lm – 3 hours 50% Beam: 600lm – 6 hours 10% Beam: 100lm – 12 hours
Boost:	1500lm – approximately 40 seconds
Input:	Charger: 100-240Vac Lamp: 5V Max. 2A
Material:	Aluminium

PART NO	DESCRIPTION	QTY
ETL61	Focus Control Pro Rechargeable Torch	1



USB-C CHARGING / AAA FACILITY

ROTATION FOCUS ALLOWS FOR AN ADJUSTABLE BEAM

GREEN ON LIGHT

300lm Flexible LED Neck Torch

The VISION Flexible LED Neck Torch is a versatile and convenient lighting solution designed for hands-free use in various settings. Featuring dual 2W LED lamps that provide a combined output of 600 lumens, this neck torch ensures bright and efficient illumination.

The on-off switch offers intuitive operation: press once for 50% brightness, twice for full 100% brightness, and three times to turn it off. For added functionality, press and hold for 3 seconds to activate the flashing light mode. The torch includes a full battery indication light, which changes from red to green when fully charged, and is equipped with over-charging and discharging protection to ensure safe usage.

One of the standout features of the VISION Flexible LED Neck Torch is its detachable heads, which can be used individually. Each head is equipped with

a magnet at the bottom, allowing for rotation and adjustment to facilitate work in confined areas on the supplied neck collar or separately on metal surfaces. This flexibility makes it an ideal tool for various tasks where precise lighting is essential.

The torch comes with a 60cm USB-C to USB-A charging cable, and the dual 3.7V 1200mAh Li-ion batteries can be fully charged in 3 to 3.5 hours. The operating time is impressive, with each head providing 7 to 8 hours on low and 2 to 2.5 hours on high. Made from durable ABS material, the ETL202 is rated IP44 for water resistance and IK07 for impact resistance, ensuring it can withstand tough working conditions.

The VISION Flexible LED Neck Torch is a reliable, adaptable, and efficient lighting solution, perfect for any hands-free application.



LED light:	2W LED - 300 lumens (each head)
Battery type & parameter:	2x High quality 3.7V 1200mAh Lithium battery (1 per head)
Charging time:	3hrs each head
Charging port:	USB-C
Protection class:	IP44, IK07
Switch dimming:	100% / 50%

Magnet:	2pcs N52 magnets (1 per head)
Net weight:	71g (per head) 192g (2x heads on neck band)
Dimensions:	Head: W: 130mm x D: 30 x H: 30mm
Accessories:	60cm USB-C to USB-A charging cable. Optional 3-Pin USB-C Adaptor (EHLPI)
Operation Time:	Low 7 - 8 hours for each head Full 2 - 2.5 hours for each head
Input:	Charger: 100-240Vac Lamp: 5V Max. 2A
Material:	ABS

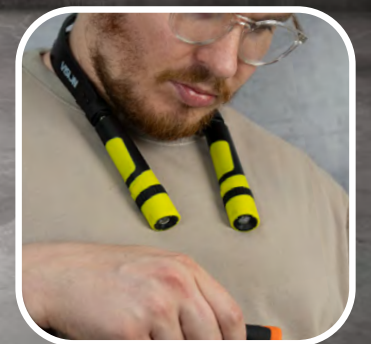
PART NO	DESCRIPTION	QTY
ETL202	300lm Flexible LED Neck Torch	1



MAGNETIC COUPLING



DETACHABLE HEADS



FLEXIBLE 360° ROTATION FOR EACH TORCH



Flexi-Twist Magnetic Hand Lamp/Torch

The VISION Flexi-Twist Magnetic Hand Lamp/Torch is a versatile and robust lighting solution, designed to meet the demands of various tasks with its flexible and user-friendly features. This innovative hand lamp/torch offers a switch sequence that includes 100% lamp brightness, 50% lamp brightness, torch mode, and off, allowing users to select the perfect amount of light for any situation.

Equipped with a 1W LED torch and a 5W SMD LED lamp, the VISION Flexi-Twist Magnetic Hand Lamp/Torch delivers reliable illumination with impressive operating times. The torch mode provides 120 lumens of light for up to 10 hours, while the lamp can run for 3 hours at full 100% brightness or 6 hours at 50% brightness, ensuring that you have ample light for extended tasks.

The lamp features a rechargeable 3.7V 2500mAh Lithium battery, which can be fully charged in just 3 hours using the supplied 1m USB-C to USB-A charging cable.

For added convenience, the package includes a USB charging plug and a 12v car adaptor, allowing you to charge the lamp from various power sources. The USB mains adaptor supports input voltages of 100-240V at 50/60Hz, with an output of 5V/1000mA, while the car adaptor supports input voltages of 12-24V, also outputting 5V/1000mA.

Designed with practicality in mind, the VISION Flexi-Twist Magnetic Hand Lamp/Torch features two hooks with 180° swivel, and a flex and twist stand with two strong magnets, enabling precise positioning and hands-free operation. Overload protection ensures safe and reliable use, making it a durable choice for professionals and DIY enthusiasts alike.

In summary, the VISION Flexi-Twist Magnetic Hand Lamp/Torch is a highly adaptable, reliable, and efficient lighting tool. Its flexible design, strong magnetic base, and long-lasting battery make it an essential addition to any toolkit, perfect for both indoor and outdoor use.

600 LUMENS	1W TORCH	6HR BATTERY LIFE	3HR CHARGE TIME	MAGNETIC BASE	IP20 RATING	USB-C CHARGING	180°/250° FLEXI-TWIST

Front light:	5W SMD LED, Max.600lm 6500K CRI 80
Battery type & parameter:	High quality 3.7V 2500mAh Lithium battery
Charging time:	3 hrs
Charging port:	USB-C
Protection class:	IP20, IK08
Switch dimming:	100% / 50%

Net weight:	330g
Dimensions:	W: 50mm x D: 42mm x H: 273mm
Accessories:	1m USB-C to USB-A charging cable, USB charging plug and car adaptor.
Operation Time:	Main Light: 3-6hrs Torch Light: 10hrs
Input:	Charger: 100-240Vac Lamp: 5V Max. 2A
Magnet:	2pcs N52 magnet in stand

PART NO	DESCRIPTION	QTY
EHL306	Flexi-Twist Magnetic Hand Lamp/Torch	1



5W SMD LED, MAX.600LM
6500K CRI 80



180°/250°
FLEXI-TWIST



INTEGRATED HOOKS AND X2 N52
MAGNETS

VISION EHL304

NEW TO THE RANGE

High CRI 95+ LED Inspection Light + Charging Dock

The VISION High CRI 95+ LED Inspection Light is an essential tool for professionals who require precision and dependability. Designed to meet diverse inspection needs, it offers three adjustable colour temperature settings (3000K, 4500K, and 6500K), making it ideal for tasks such as colour matching, detailing, and general paintwork. With a Colour Rendering Index (CRI) of 95+, this light ensures true-to-life colour accuracy, making it perfect for paint inspections and any application where accurate light representation is crucial.

This lighting solution is especially suited for the painting industry, providing the perfect illumination for examining painted surfaces with precision. Its intensity can be adjusted from 10% to 100%, allowing for fine-tuned brightness control tailored to any task.

The VISION High CRI 95+ LED Inspection Light is

equipped with a telescopic flexible nylon hook for versatile positioning, and an integral 90° stand with two strong magnets, ensuring secure, hands-free operation on metal surfaces. The four-level battery capacity display keeps you informed about power levels, so you're never caught off guard.

Charging is simple and efficient with a USB-C port and included charging dock. Constructed with a die-cast aluminium component for effective heat dissipation and enhanced durability, this light is also equipped with overload protection for safe, reliable use.

Incorporating exceptional colour accuracy and a versatile design, the VISION High CRI 95+ LED Inspection Light is a powerful, adaptable, and robust addition to any professional tool kit, built to deliver top-tier performance and reliability.

--	--	--	--	--	--	--	--

Front light:	10W COB - 800 lumens
Colour Temp:	3000K / 4500K / 6500K
Battery type & parameter:	High quality 3.7V 5000mAh Lithium battery
CRI:	95+
Charging time:	6hrs
Charging port:	Dock or USB-C
Protection class:	IP54, IK08
Switch dimming:	10% to 100%

Magnet:	2pcs N52 magnet
Net weight:	600g (with dock); 385g (lamp only)
Dimensions:	Docking station: W: 80mm x D: 70mm x H: 80mm Lamp: W: 60mm x D: 35mm x H: 215mm
Accessories:	100cm USB C to USB A charging cable & Docking station. Optional 3-Pin USB-C Adaptor (EHLP1)
Operation Time:	Minimum 2 hours (100% Brightness) Maximum 20 hours (10% Brightness)
Input:	Charger: 100-240Vac Lamp: 5V Max. 2A
Material:	Aluminium, ABS & PC

PART NO	DESCRIPTION	QTY
EHL304	High CRI 95+ LED Inspection Light + charging dock	1



HIGH CRI 95+ COLOUR CHANGE LED LIGHT



COLOUR TEMP: 3000K / 4500K / 6500K



90° SWIVEL STAND WITH X2 N52 MAGNETS

VISION EHL1010

NEW TO THE RANGE

Multi Position 40 SMD LED Under Bonnet Lamp

The VISION Multi Position 40 SMD LED Under Bonnet Lamp is the ultimate solution for vehicle repair and inspection, providing reliable and powerful illumination. This rechargeable under-bonnet work light features a 10W 40SMD COB LED that emits 6500K white light, delivering a maximum output of 1000 lumens in flood beam mode. With a beam angle of 135° and a Colour Rendering Index (Ra) of 75, it ensures excellent visibility and Colour accuracy.

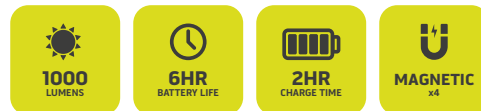
Powered by a high-quality 3.7V 4000mAh lithium battery, the VISION Multi Position Under Bonnet Lamp offers impressive operation times: 500 lumens for 6 hours on low and 1000 lumens for 3.5 to 4 hours on high. The battery fully charges in just 2 hours using the USB-C charging port. Its protection class is IP20 and IK07, ensuring durability in challenging conditions.

The work light is designed with user convenience in

mind. It features an on-off switch that allows you to toggle between 50% and 100% LED brightness or turn it off, with an additional 3-second press to activate a flashing light. The full battery indicator changes from red to green when fully charged, and the light includes over-charging and discharging protection for added safety.

Constructed from aluminium alloy and ABS, the VISION Multi Position Under Bonnet Lamp is robust yet lightweight at 1200g. It comes with a 60cm USB-C to USB-A charging cable and features an extendable bracket, two magnets on each fixing, silicone grippers, and 360° rotary hooks, allowing for versatile positioning and secure attachment.

Experience superior illumination and convenience with the VISION Multi Position Under Bonnet Lamp, the perfect companion for all your vehicle repair and inspection needs.



LED light:	10W 40SMD COB LED, 6500K Max. 1000lm in flood beam
Beam Angle	135°
Colour Rendering Index(Ra)	75
Battery type & parameter:	High quality 3.7V4000mAh Lithium battery
Charging time:	2hrs
Charging port:	USB-C
Protection class:	IP20, IK07
Magnet:	4pcs N52 magnet on 360° Rotary Hook housing

Net weight:	1200g
Dimensions:	W: 1200mm x D: 60mm x H: 65mm Extended: W: 2000mm x D: 60mm x H: 65mm
Accessories:	USB-C to USB-A charging cable. Optional 3-Pin USB-C Adaptor (EHLPI)
Operation Time:	Low: 500lm for 6hrs High: 1000lm for 3.5-4hrs
Input:	Charger: 100-240Vac Lamp: 5V Max. 2A
Working Temperature:	-35°C to 80°C
Material:	Aluminium Alloy & ABS

PART NO	DESCRIPTION	QTY
EHL1010	Multi Position 40 SMD LED Inspection Lamp	1



10W 40SMD COB LED, 6500K
MAX. 1000LM IN FLOOD BEAM



360° INTEGRATED HOOK



2X N52 SUPER STRONG MAGNETS FOR EACH FIXING



VISION EHL1000

NEW TO THE RANGE

10W Multi Position COB LED Inspection Lamp

The VISION 10W Multi Position COB LED Inspection Lamp is a versatile and powerful tool designed to meet all your lighting needs. This 10W multi-position COB LED inspection lamp delivers an impressive 1000 lumens of bright, white light, making it ideal for detailed work and inspections.

The user-friendly on-off switch allows for easy operation: press once for 50% brightness, twice for full 100% brightness, and three times to turn it off. The lamp also features a motion sensor mode. Simply press the motion sensor switch, and you can control the light by waving your hand within 10cm of the sensor. This mode automatically turns off when not in use, providing hands-free convenience.

A full battery indicator light changes from red to green when fully charged, and the lamp includes over-charging and discharging protection to ensure

safe operation. With a high-quality 3.7V 4400mAh lithium battery, the EHL1000 offers 4-5 hours of runtime at 500 lumens and 2-2.5 hours at 1000 lumens. The battery charges in just 3.5-4 hours using the included USB-C port and 60cm USB-C to USB-A charging cable to an optional 3-Pin USB-C Adaptor (EHLPI1).

Designed for durability, the lamp is built with ABS and PC materials and features a protection class of IP20 and IK07. Two N52 magnets on the 190° end housings provide secure attachment to metal surfaces, allowing for flexible positioning.

Whether for professional or personal use, the VISION 10W Multi Position COB LED Inspection Lamp offers reliability, convenience, and exceptional illumination, making it an essential addition to your workshop.

 1000 LUMENS	 5HR BATTERY LIFE	 3.5HR CHARGE TIME	 MAGNETIC ROTATING ENDS X2	 IP20 RATING	 USB-C CHARGING	 MOTION SENSOR	 190° MAGNET
--	---	--	--	--	---	---	--

LED light:	10W COB - 1000 lumens
Battery type & parameter:	High quality 3.7V4400mAh Lithium battery
Charging time:	3.5-4hrs
Charging port:	USB-C
Protection class:	IP20, IK07
Magnet:	2pcs N52 magnet on 190° end housings
Net weight:	1200g

Dimensions:	W: 500mm x D: 40mm x H: 42mm
Accessories:	60cm USB-C to USB-A charging cable, Optional 3-Pin USB-C Adaptor (EHLPI1)
Operation Time:	Low: 500lm for 4-5hrs High: 1000lm for 2-2.5hrs
Input:	Charger: 100-240Vac Lamp: 5V Max. 2A
Working Temperature:	0°C to 45°C
Material:	ABS & PC
Motion Sensor:	Range - 10cm

PART NO	DESCRIPTION	QTY
EHL1000	10W Multi Position COB LED Inspection Lamp	1



10W COB 1000 LUMENS BRIGHT WHITE LIGHT



INTEGRATED HOOKS



2X N52 SUPER STRONG MAGNETS FOR EACH FIXING

VISION EHL300

SMD Flexible Magnetic Hand Lamp/Torch

Experience unparalleled illumination with the VISION SMD Flexible Magnetic Hand Lamp/Torch! This powerful and versatile tool is designed to transform the way you light up your workspace, offering a host of exciting features.

Equipped with 6x 0.5W High Power SMD LED lamps, this hand lamp delivers an impressive 3W/400 lumens of cool white light, ensuring exceptional visibility for any task. Additionally, it features a 1W LED torch, ideal for when you need a focused beam of light for precision work.

Say goodbye to power concerns! This hand lamp/torch comes with a USB charging plug and car adapter, making it easy to recharge whether you're at work, home or on the go. This ensures that you have a reliable source of light whenever you need it.

The VISION SMD Flexible Magnetic Hand Lamp/Torch features two integrated rotating hooks, allowing it to

be positioned at multiple angles for ultimate flexibility in directing the light. With two rear magnets and a flexible magnetic base, you can position the lamp/torch precisely, keeping your hands free to focus on the task at hand.

Choose from a range of colour options to match your style: Black/Blue, Black/Red, Hi-Vis Yellow, or Hi-Vis Orange. Regardless of the colour, you'll have a dependable and powerful lighting tool at your disposal for any job.

Whether you're a professional tradesperson or an outdoor enthusiast, the VISION SMD Flexible Magnetic Hand Lamp/Torch is an essential addition to your toolkit. Its impressive brightness, versatile features, and robust design make it the perfect companion for all your lighting needs. Illuminate your workspace with confidence and precision with this exceptional hand lamp/torch!



LED light:	6 x 0.5W High Power SMD LED Lamp Provides 3W/400 Lumens of cool white light
Battery type & parameter:	High quality 3.7V/2200mAh lithium battery pack
Charging time:	5hrs
Charging port:	USB-C
Protection class:	IP20, IK07
Net weight:	284g

Magnet:	2pcs N52 magnet in Rear & 1pc N52 magnet in Flexible Base
Dimensions:	W: 65mm x D: 42mm x H: 274mm
Accessories:	Included : 3 pin USB-C charging plug & car adaptor. 1m USB to USB-A cable
Operation Time:	Light: 3.5hrs Torch: 6 Hrs
Input:	Charger: 100-240Vac Lamp: 5V Max. 1A
Material:	PC, ABS with rubber coating

PART NO	DESCRIPTION	QTY
EHL300LY	Hi-Vis Yellow SMD Flexible Magnetic Hand Lamp/Torch	1
EHL300LR	Hi-Vis Orange SMD Flexible Magnetic Hand Lamp/Torch	1
EHL300B	Black/Blue SMD Flexible Magnetic Hand Lamp/Torch	1
EHL300R	Black/Red SMD Flexible Magnetic Hand Lamp/Torch	1



6 X 0.5W HIGH POWER SMD LED LAMP PROVIDES 3W/400 LUMENS OF COOL WHITE LIGHT



X2 N52 MAGNETS AND X2 HOOKS



FLEXIBLE BASE WITH MULTIPLE ANGLES

VISION EHL301

SMD Compact Hand Lamp & UV Torch

The VISION SMD Compact Hand Lamp & UV Torch is a versatile and powerful lighting tool that combines a high-intensity LED lamp with a specialised UV torch. With its impressive features and convenient design, this hand lamp is built to handle various tasks and provide essential UV detection capabilities.

The LED lamp delivers an intense 1000 lumens of super white light, ensuring excellent visibility and illumination in any situation. Additionally, the 3W UV torch offers a wavelength of 395 nm, making it ideal for detecting UV-reactive substances and leaks. This UV torch feature is particularly useful for finding leaks in automotive, HVAC, and industrial applications. By shining the UV light on areas, you can easily identify and pinpoint leaks, saving time and effort in maintenance and repair tasks.

The hand lamp comes with a range of practical features, including an integral belt clip, a 360-degree swivel hook, and a smart stand with a strong magnet,

allowing for easy hands-free use and versatile positioning options. Whether you need to hang it, attach it to a metal surface, or stand it up, this lamp adapts to your needs.

Equipped with a Li-ion 3.7V/5000mAh battery, the hand lamp provides reliable and long-lasting performance. It is designed with a waterproof rating of IP54, ensuring resistance to dust and water splashes, making it suitable for use in various environments.

Complete with a USB charging lead, USB plug, and car adaptor, the hand lamp's charging time is approximately 6 hours, and it offers an impressive operating time of 3.5 hours on full power.

Whether you're inspecting, detecting UV-sensitive materials, or in need of a powerful handheld light source, the VISION SMD Compact Hand Lamp & UV Torch is the perfect tool.

 1000 LUMENS	 3W UV TORCH	 7HR BATTERY LIFE	 6HR CHARGE TIME	 MAGNETIC BASE	 IP54 RATING	 USB-C CHARGING	 HANGING HOOK
--	--	---	--	--	--	--	---

Front light:	10W SMD 1000LM
Battery type & parameter:	High quality 3.7V 5000mAh Lithium battery
Charging time:	6 hrs
Charging port:	USB-C
Protection class:	IP54, IK08
Switch dimming:	100% / 50%

Net weight:	333g
Dimensions:	W: 60mm x D: 45mm x H: 220mm
Accessories:	1m USB-C to USB-A charging cable, USB charging plug and car adaptor
Operation Time:	3.5hrs - 7hrs
Input:	Charger: 100-240Vac Lamp: 5V Max. 2A
Magnet:	2pcs N52 magnet in flexible base

PART NO	DESCRIPTION	QTY
EHL301	SMD Compact Hand Lamp & UV Torch	1



SPECIALISED UV TORCH



X2 N52 MAGNET IN FLEXIBLE BASE



USB-C CHARGING

VISION EHL305

COB Slimline Inspection Lamp/Torch

The VISION COB Slimline Inspection Lamp/Torch is a versatile and powerful lighting tool, designed to be robust and provide reliable illumination. Equipped with a range of user-friendly features, this lamp and torch ensures you're always equipped with the right lighting solution.

Included with a 1-meter Micro-B USB cable, mains adapter, and in-vehicle charging adaptors (230V and 12V DC), the EHL305 ensures convenient charging options, whether you're at work, home or on the road. This versatility makes it an essential tool for professionals who need reliable lighting in different environments.

Featuring a slim 9mm 2W inspection torch which is perfect for accessing tight and confined areas that are otherwise difficult to illuminate. The 3x COB LED lamp modes (500, 250, and 50 lumens) provide adjustable brightness levels to suit various lighting needs, making the lamp incredibly versatile. With a remarkable run time of up to 20 hours, you can trust that this lamp

will last through extended tasks without the need for frequent recharging.

The strong magnetic base and hanging hook allow for hands-free operation, enhancing its practicality. The dual flexible folding system ensures precise positioning of the light, enabling you to direct the illumination exactly where it's needed. Additionally, the battery power indicator keeps you informed about the remaining power, ensuring you're always ready to go without unexpected outages.

With its thoughtful design and impressive features, the VISION COB Slimline Inspection Lamp/Torch is the ultimate companion for tasks that require precision, versatility, and reliable lighting. Whether you're working in automotive repair, electrical work, or general maintenance, this tool provides the illumination you need to work with confidence. Illuminate your workspace using this exceptional lighting tool and experience the convenience and efficiency it brings to your daily tasks.



LED light:	Front 5W COB Torch: 2W 150LM
Battery type & parameter:	High quality 3.7V2500mAh lithium battery pack
Charging time:	5.5hrs
Charging port:	USB-C
Protection class:	IP54, IK07

Net weight:	235g
Dimensions:	Open: W: 30mm x D: 30mm x H: 320mm Closed: W: 30mm x D: 30mm x H: 190mm
Accessories:	Included : 3 pin USB-C charging plug & car adaptor. 1m USB to USB-A cable
Operation Time:	100%: 500LM, 2.5hrs 50% 250LM, 5hrs 10%: 50 LM, 20 hrs
Input:	Charger: 100-240Vac Lamp: 5V Max. 1A

PART NO	DESCRIPTION	QTY
EHL305	COB SLIMLINE INSPECTION Lamp/Torch	1



THREE ADJUSTABLE BRIGHTNESS LEVELS



DUAL FLEXIBLE FOLDING SYSTEM



3X COB LED LAMP MODES (500, 250, AND 50 LUMENS)

VISION EHL302

COB Hand Lamp & Charging Dock

The VISION COB Hand Lamp with Charging Dock is a reliable and versatile lighting solution that offers powerful illumination and convenient charging options. With its robust construction and impressive features, this hand lamp is designed to meet the demands of various tasks and environments.

Equipped with a COB lamp, the hand lamp delivers 10W/1000 lumens of bright white light, ensuring excellent visibility in any situation. Additionally, it includes a 3W LED torch that offers 220 lumens of white light, providing a reliable backup lighting option.

The heavy-duty body of the lamp is made from aluminium, PC, and rubber, ensuring durability and resistance to rough handling. It features an integrated hook and powerful rear magnets, allowing

for hands-free use and secure attachment to metal surfaces.

The hand lamp comes with a wall-mountable docking station, a USB charging lead, a USB plug, and a car adaptor, providing versatile charging options. The charging time is approximately 8 hours using the charging station and 5.5 hours using a USB charger, while the operating time on full power is 3 hours.

Powered by a Li-ion 3.7V/5000mAh battery, the hand lamp offers reliable and long-lasting performance. It has a waterproof rating of IP54, ensuring resistance to dust and water splashes.

Wherever you're working, the VISION Cob Hand Lamp with Charging Dock is a dependable lighting tool that provides bright illumination, convenient charging, and durability for all your lighting needs.


1000
LUMENS


3W
SPOT LED


15HR
BATTERY LIFE


5.5HR
CHARGE TIME


MAGNETIC
BASE


IP54
RATING


USB-C
CHARGING


HANGING
HOOK

Front light:	10W COB LED, 6500K CRI 80 MD 1000LM
Torch:	3W LED, Max. 220lm, 6500K CRI 80
Battery type & parameter:	High quality 3.7V 5000mAh Lithium battery
Charging time:	5.5hrs by USB-C cord; 7hrs by power station
Charging port:	USB-C
Protection class:	IP54, IK08
Switch dimming:	100% / 75% / 50%

Net weight:	607g (with dock); 389g (lamp only)
Dimensions:	Docking station: W: 80mm x D: 70mm x H: 80mm Lamp: W: 58mm x D: 35mm x H: 212mm
Accessories:	Included : Docking station, 3 pin USB -C charging plug & car adaptor 1m USB-C to USB-A cable
Operation Time:	Main Light: 3hrs - 15hrs Torch Light: 10hrs
Input:	Charger: 100-240Vac Lamp: 5V Max. 1A
Magnet:	2pcs N52 magnet in stand

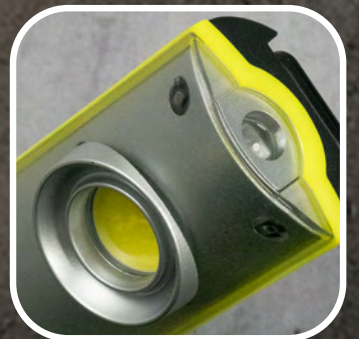
PART NO	DESCRIPTION	QTY
EHL302	COB Hand Lamp & Charging Dock	1



DESK OR WALL MOUNTABLE CHARGING DOCK



X2 N52 MAGNET IN FLEXIBLE BASE



3W LED, MAX. 220LM, 6500K CRI 80 TORCH

VISION EHL303

COB Slimline Inspection Lamp & Torch

The advanced VISION COB Slimline Inspection Lamp & Torch is a cutting-edge lighting solution that combines the power of a COB lamp and an LED torch. With its impressive specifications and practical features, this versatile tool is designed to enhance precision and accuracy during inspections and tasks.

The COB lamp delivers a formidable 10W 800 lumens of white light, providing ample brightness for a wide range of applications. Additionally, the 2W LED torch offers 150 Lumens of white light, serving as a reliable backup light source.

Featuring an integrated magnetic stand and hook, this inspection lamp and torch allow users to position it with precision, ensuring optimal visibility in any situation.

Equipped with a Li-ion 3.7V/2500mAh battery, the device boasts an impressive operating time ranging from 2 to 12 hours, depending on the chosen intensity setting. Its charging time of 4.5 hours ensures quick and efficient power restoration.

Designed with a waterproof rating of IP65, this inspection lamp and torch are resistant to dust and water, making it suitable for various indoor and outdoor tasks.

Whether you're inspecting tight spaces, conducting repairs, or seeking a reliable light source for any job, the VISION COB Slimline Inspection Lamp & Torch is the ultimate companion, offering powerful illumination, precise positioning, and long-lasting performance in one sleek and practical package.

 800 LUMENS	 2W SPOT LED	 12HR BATTERY LIFE	 4.5HR CHARGE TIME	 MAGNETIC BASE	 IP65 RATING	 USB-C CHARGING	 HANGING HOOK
---	--	--	--	--	--	--	---

Front light:	Max.800lm 6500K CRI 80
Torch:	Max. 150lm, 6500K CRI 80
Battery type & parameter:	High quality 3.7V 2500mAh Lithium battery
Charging time:	4.5hrsv
Charging port:	USB-C
Protection class:	IP65, IK08
Switch dimming:	100% to 5% stepless dial

Net weight:	295g
Dimensions:	Docking station: W: 80mm x D: 70mm x H: 80mm Lamp: W: 58mm x D: 35mm x H: 212mm
Accessories:	Included : 3 pin USB-C charging plug & car adaptor. 1m USB-C to USB-A cable
Operation Time:	Main Light: 2hrs - 12hrs Torch Light: 12hrs
Input:	Charger: 100-240Vac Lamp: 5V Max. 1A
Magnet:	N52 magnet in stand with concealed hook

PART NO	DESCRIPTION	QTY
EHL303	COB Hand Lamp & Charging Dock	1



100% TO 5% STEPLESST DIAL



IP65, IK08



N52 MAGNET IN STAND WITH CONCEALED HOOK

VISION ETL201

350lm LED Motion Sensor Head Torch

The VISION 350lm LED Motion Sensor Head Torch is a state-of-the-art lighting solution that combines convenience with exceptional brightness. This versatile head torch is designed to provide reliable illumination for a wide range of activities, making it the ideal companion for outdoor adventures, work in low-light conditions, or emergency situations.

The LED lamp boasts an impressive 5W 350 lumen adjustable focus beam, allowing you to customize the light spread according to your needs. The on/off switch provides traditional control, while the innovative motion sensor feature enables you to operate the head torch effortlessly by simply waving your hand in front of the sensor.

Designed for maximum comfort and flexibility, the head torch comes with an adjustable head strap, ensuring a secure fit for any head size. An additional directional plate provides fixed lighting, enhancing precision and accuracy for specific tasks.

Equipped with a Li-ion 3.7V/1400mAh battery, the head torch offers an outstanding operating time of up to 30 hours on full power, ensuring you won't be left in the dark when you need it most. The device can be conveniently charged using the USB charging lead, USB plug, or car adaptor, with a quick charging time of 2.6 hours.

Engineered for durability and resilience, the head torch boasts a waterproof rating of IP65, making it resistant to dust and water splashes. This makes it suitable for various outdoor activities, even in challenging weather conditions.

Whether you're camping, hiking, cycling, or working in dimly lit environments, the VISION 350lm LED Motion Sensor Head Torch is the ultimate lighting companion. Its adjustable focus beam, motion sensor technology, long-lasting battery life, and weather-resistant design make it a reliable and practical tool for all your lighting needs. Stay illuminated and stay in control with this advanced head torch.



Light:	5W LED, Max.350lm 6500K CRI 80
Battery type & parameter:	High quality 3.7V 1400mAh Lithium battery
Charging time:	2.6hrs
Charging port:	USB-C
Protection class:	IP65, IK07
Switch dimming:	100% to 10% stepless dial
Net weight:	120g

Dimensions:	Lamp: W: 70mm x D: 35mm x H: 40mm
Accessories:	Included : 3 pin USB-C charging plug & car adaptor. 1m USB-C to USB-A cable
Operation Time:	100%: 3.5hrs 50%: 7hrs 10%: 30hrs
Input:	Charger: 100-240Vac Lamp: 5V Max. 1A
Head Strap :	One size fits all. Anti-slip silicon on internal side of the head strap
Motion Sensor:	Range - 10cm

PART NO	DESCRIPTION	QTY
ETL201	350lm LED Motion Sensor Head Torch	1



MAGNETIC COUPLING

DETACHABLE HEADS

FLEXIBLE 360° ROTATION FOR EACH TORCH

VISION EWL100

Zoom Focus LED Mini Work Light

The VISION Zoom Focus LED Mini Work Light is a compact and powerful lighting tool engineered to perform in any work environment. Its robust, heavy-duty cast aluminium housing guarantees durability and reliability, making it ideal for even the most demanding conditions.

Boasting an impressive 1800 lumens output from its 20W COB LED, this mini work light provides bright illumination to meet a variety of needs. The dual mode feature allows users to adjust the lumen output to either 50% or 100%, offering flexibility to adapt to different lighting situations with ease.

This work light goes beyond illumination; it features a USB power bank output socket (5V Max. 2A), enabling you to charge your devices on the go. Rated IP54 for wet location use, it is resistant to water splashes, making it suitable for both indoor and outdoor applications.

The Mini Work Light offers up to 6 hours of run time on a single charge, ensuring extended usage for your tasks. A built-in battery power indicator keeps you informed about the remaining power level, ensuring that you are always prepared for any job.

For added convenience, a magnetic base (EWL101), available separately, enables easy attachment to metal surfaces for hands-free use. This feature allows you to focus on your work without the need to hold the light, enhancing productivity.

Whether you're involved in construction, automotive repairs, or require reliable illumination on the go, the VISION Zoom Focus LED Mini Work Light is your perfect companion. Offering durability, adjustable brightness, and versatile power options, this mini work light packs efficiency and convenience into a compact design.



LED light:	20W COB, 6000-7000K, Ra. > 70. CRI 1800LM (Wide Angle) / 900LM (Spotlight)
Battery type & parameter:	High quality 7.4V5000mAh lithium battery pack
Powerbank, USB Output:	5V Max. 2000mA
Charging time:	5hrs
Charging port:	Round DC port
Protection class:	IP54, IK08
Net weight:	1180g

Dimensions:	W: 186mm x D: 137mm x H: 48mm
Accessories:	Included : 3 pin 12v 1A with 1.8m cable. Car adaptor with 1.8m cable
Operation Time:	3 Hours (100%) / 6 Hours (50%)
Operating Temperature	-5°C - +45°C (Discharge) 0°C - +45°C (Charge)
Input:	Charger: 100-240Vac Lamp: 5V Max. 2A
Material:	Aluminium, Polycarbonate, TPR
Certifications:	Light: CE ROHS. Adaptor: CE ROHS GS

PART NO	DESCRIPTION	QTY
EWL100	Zoom Focus LED Mini Work Light	1
EWL101	Magnetic Clip On Base	1



1800 LUMENS OUTPUT FROM THE 20W COB LED



ROTATION FOCUS ALLOWS FOR AN ADJUSTABLE BEAM



USB POWERBANK

VISION EWL102

COB Heavy Duty Work Light & Powerbank

VISION'S COB Heavy Duty Work Light & Powerbank is the high-performance lighting tool designed to tackle demanding tasks with ease. This versatile work light is built for durability and functionality, providing powerful illumination and the added convenience of a rear charging powerbank.

With its COB lamp delivering an impressive 30W 2800 lumens of bright white light and an LED colour temperature of approximately 6500K, this work light ensures optimal visibility in any work environment.

The rear charging powerbank feature allows you to use the work light as a power source to power or charge your devices, thanks to its charger output of 5V max. The 7.4V/4400mAh Li-ion battery offers ample power to keep you going for up to 5 hours on full brightness.

Designed with a practical adjustable rear stand, the work

light can be easily positioned to suit your specific needs. Additionally, the stand is wall-mountable, providing flexible installation options for your workspace.

Supplied with a USB charging lead, USB plug, and car adaptor, ensuring versatile charging capabilities. With a charging time of 6 hours, this work light will be ready to accompany you through extended tasks and projects.

This work light boasts a waterproof rating of IP54, providing protection against dust and water splashes, making it suitable for various indoor and outdoor work applications.

Whether you're working in construction, performing repairs, or in need of reliable lighting and power on the go, this Heavy Duty Work Light is the ultimate companion, offering robust performance, versatility, and convenience in one rugged and reliable package.



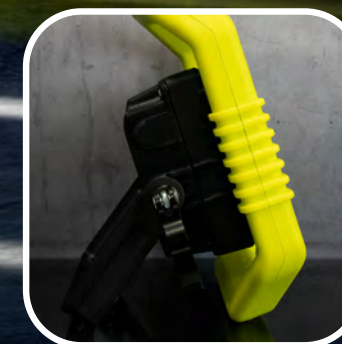
Light:	30W COB LED, Max.2800lm 6500K CRI 80
Battery type & parameter:	High quality 7.4V 4400mAh lithium battery pack
Charging time:	6hrs
Charging port:	USB-C
Protection class:	IP54, IK08
Net weight:	1600g

Dimensions:	W: 230mm x D: 100mm x H: 245mm
Accessories:	Included : 3 pin USB-C charging plug & car adaptor. 1m USB to USB A cable
Operation Time:	100%: 2.5hrs 50%: 5hrs 10%: 10hrs
Input:	12V Max. 2000mA

PART NO	DESCRIPTION	QTY
EWL102	COB Heavy Duty Work Light & Powerbank	1



30W COB LED, MAX.2800LM
6500K CRI 80



ADJUSTABLE REAR STAND



CONVENIENCE OF A REAR CHARGING
POWERBANK.

Wireless Fast Charging Pad

The VISION Wireless Dual Fast Charging Pad is a cutting-edge charging solution that combines efficiency, versatility and durability. With exceptional features and specifications, this charging pad is designed to keep your devices powered up at lightning speed.

The Fast Charging Pad is designed to charge two devices simultaneously, making it ideal for busy individuals with multiple devices. It works seamlessly with compatible mobile phones up to 168 x 85 x 10mm in size, ensuring a hassle-free charging experience for a wide range of devices.

Built to withstand the rigours of daily use, the Fast Charging Pad boasts IK08 shock resistance, providing peace of mind that your devices are protected during the charging process.

For added convenience, the Fast Charging Pad features strong magnets on the rear, allowing for easy mounting on metal surfaces. It also comes with

built-in screw holes for permanent mounting, giving range of 5-12V DC, 20W, while the output provides a maximum of 10+5W per pad.

The charging time depends on the battery pack but generally ranges from approximately 3.0-5.0 hours, ensuring your devices are ready for use in no time.

Included with the Fast Charging Pad is a PD 20W USB-C to USB-C 1m lead, providing a reliable connection for charging and efficient power delivery.

Embrace the future of fast and convenient charging with the VISION Wireless Fast Charging Pad, a sleek and powerful solution that keeps your devices charged and ready for action.



Input:	5-12V DC, 20W
Output:	Each induction area 5V Max.1A
Charging port:	USB-C
Magnet:	N52 magnet*2PCS in back

Dimensions:	W: 265mm x D: 110mm x H: 28mm
Net weight:	370g
Accessories:	USB-C cord and mains charging adaptor included



PART NO	DESCRIPTION	QTY
EHLW400	Wireless Fast Charging Pad	1



EHLW410

EHLW430

EHLW440

EHLW420



1000LM COB Compact Spot Light

Introducing the VISION Wireless 1000LM COB Compact Spotlight, the versatile lighting solution designed to meet your illumination needs. This compact and powerful spotlight is packed with features that make it a must-have light for your life.

The highlight of this spotlight is its COB Lamp, which provides an impressive 10W/1000 lumens of white light. With three adjustable brightness levels, you can customise the lighting output to suit your requirements. The run time options include Low mode (250LM) for 12 hours, Medium mode (500LM) for 6 hours, and High mode (1000LM) for 3 hours.

Additionally, the spotlight comes with a 3W LED Torch that offers 300 lumens of white light. The torch has a run time of 300 lumens for 9.5 hours, providing a reliable backup light source when needed.

The spotlight supports wireless charging, allowing you to conveniently charge it without the hassle of cables. It also includes a PD 20W Mains Plug and PD 20W USB-C charging lead, giving you the flexibility to charge it from mains power or any standard USB power source.

With an integrated stand, the lamp can be positioned at a multitude of angles, providing hands-free lighting in any situation. Furthermore, the spotlight features a powerful stand magnet, allowing you to securely attach it to metal surfaces for convenient use.

Whether you're camping, working in a dimly lit area, or in need of emergency lighting, the NEW VISION Wireless 1000LM COB Compact Spotlight is the perfect companion, offering powerful and versatile illumination whenever and wherever you need it.

 1000 LUMENS	 3W SPOT LED	 12HR BATTERY LIFE	 1.5HR CHARGE TIME	 MAGNETIC BASE	 IP65 RATING	 USB-C CHARGING	 WIRELESS CHARGING
--	--	--	--	--	--	--	--

Front light:	10W COB LED, 6500K CRI 80 Max.1000lm
Top light:	3W LED, Max. 300lm 6500K
Battery type & parameter:	High quality 3.7V2500mAh Lithium battery
Charging time:	1.5hrs USB-C cord / 3hrs wireless
Charging port:	USB-C
Protection class:	IP65, IK08
Magnet:	N52 magnet in bottom
Net weight:	200g

Dimensions:	W: 72mm x D: 39mm x H: 92mm
Accessories:	USB-C cord Optional Wireless charging Pad (EHLW400) & 3-Pin USB-C Adaptor (EHLP1)
Operation Time:	Low: 250lm - 12hrs Medium: 500lm - 6hrs High: 1000lm - 3hrs Torch: 300lm - 9.5hrs
Input:	Charger: 100-240Vac Lamp: 5V Max. 2A
Output:	Charger: 5V Max. 1000mA
Switch sequences:	Spotlight-Flood Low-Flood Medium-Flood High-Off

PART NO	DESCRIPTION	QTY
EHLW410	Wireless 1000LM COB Compact Spot Light	1
EHLW411	Wireless 1000LM COB Compact Spot Light + Wireless Charging Pad	1



10W COB 1000 LUMENS BRIGHT WHITE LIGHT



USB-C AND WIRELESS CHARGING



N52 SUPER STRONG MAGNET IN BACK FOR HANDS FREE USE



1000LM COB Slim Inspection Lamp

The VISION Wireless 1000LM COB Slim Inspection Lamp is the perfect lighting solution for your inspection needs. This sleek and powerful lamp is designed to provide you with exceptional illumination in various environments.

Equipped with a COB Lamp, the Inspection Lamp delivers an impressive 10W/1000 lumens of bright white light. It offers three different lighting modes to suit your preferences and requirements: Low mode (200LM) provides a long-lasting illumination of up to 12 hours, Medium mode (500LM) lasts for 6 hours, and High mode (1000LM) provides a powerful beam for 3 hours.

In addition to the COB Lamp, the Inspection Lamp features a 2W LED torch that emits 200 lumens of white light. The torch has a run time of 9 hours, ensuring a reliable backup light source whenever you need it.

With the included PD 20W mains plug and PD 20W USB-C charging lead, you can conveniently charge the lamp from either a mains power source or a standard USB power outlet. The Inspection Lamp also supports wireless charging, providing you with added flexibility and convenience.

The lamp's base is equipped with a powerful magnet, allowing for hands-free use and secure attachment to metal surfaces. Furthermore, the 250° horizontal and 150° vertical folding head enables you to adjust the angle of the light to illuminate your workspace precisely.

Whether you're conducting inspections, working in dark or confined spaces, or simply need a reliable light source on the go, the new VISION Wireless 1000LM COB Slim Inspection Lamp is the ideal choice, offering exceptional brightness, versatility, and convenience in a compact design.

 1000 LUMENS	 2W TORCH	 12HR BATTERY LIFE	 1.5HR CHARGE TIME	 MAGNETIC BASE	 IP54 RATING	 USB-C CHARGING	 WIRELESS CHARGING
--	---	--	--	--	--	--	--

Front light:	10W LED, 6500K CRI 80 Max. 1000lm in flood beam
Top light:	2W LED, Max. 200lm 6500K
Battery type & parameter:	High quality 3.7V2500mAh Lithium battery
Charging port:	USB-C
Protect:	IP54, IK07
Magnet:	2pcs N52 magnet in bottom
Dimensions:	Head in low position: W: 45mm x D: 35mm x H: 227mm Head in top position: W: 45mm x D: 35mm x H: 347mm

Net weight:	260g
Accessories:	USB-C cord Optional Wireless charging Pad (EHLW400) & 3-Pin USB-C Adaptor (EHL1)
Charging time:	1.5hrs USB-C cord / 3hrs wireless
Charging Time USB:	1.5hours/PD20W
Operation Time:	Low: 200lm - 12 Hours Medium: 500lm - 6 Hours High: 100lm - 3 hours Top torch: 150lm for 9hrs
Input:	Charger: 100-240V AC Lamp: 5V max. 1A/PD20W

PART NO	DESCRIPTION	QTY
EHLW420	Wireless 1000LM COB Slim Inspection Lamp	1
EHLW421	Wireless 1000LM COB Slim Inspection Lamp + Wireless Charging Pad	1



10W COB 1000 LUMENS BRIGHT WHITE LIGHT



USB-C AND WIRELESS CHARGING



2X N52 SUPER STRONG MAGNETS IN BASE FOR HANDS FREE USE





900LM LED Adjustable Beam Torch

The VISION Wireless 900LM LED Adjustable Beam Torch, a versatile and powerful lighting solution for all your indoor and outdoor needs. With its impressive features and functionality, this torch is designed to provide you with reliable and adjustable illumination whenever and wherever you need it.

Equipped with an LED lamp, the Adjustable Beam Torch delivers a spot beam of 10W/900 lumens, ensuring a bright and focused light source. It offers three different brightness levels to suit your preferences and requirements: Low mode (200LM) provides a remarkable 12 hours of continuous illumination, Medium mode (450LM) lasts for 6 hours, and High mode (900LM) delivers a powerful beam for 3 hours.

The torch comes with a PD 20W mains plug and PD 20W USB-C charging lead, allowing you to conveniently charge it from a mains power source or any standard USB power outlet. As with the full VISION Wireless range, it supports wireless charging, providing you with added flexibility and convenience.

The powerful base magnets enable hands-free use, allowing you to attach the torch securely to metal surfaces. Additionally, the 180° swivel head allows you to adjust the direction of the light, providing optimal coverage and versatility.

Whether you're working, camping, exploring the outdoors, or in need of a reliable torch for emergency situations, the VISION Wireless 900LM LED Adjustable Beam Torch is the perfect companion. Its bright output, adjustable beam, charging options, and convenient features make it an essential tool for any lighting needs.

 9000 LUMENS	 12HR BATTERY LIFE	 1.5HR CHARGE TIME	 MAGNETIC BASE	 IP54 RATING	 USB-C CHARGING	 WIRELESS CHARGING	 180° HEAD
--	--	--	--	--	---	---	--

LED Light:	10W LED, 6500K CRI 80 Max. 900lm in flood beam Max. 200lm 180meters long in spot beam
Battery type & parameter:	High quality 3.7V2500mAh Lithium battery
Charging time:	1.5hrs USB-C cord / 3hrs wireless
Charging port:	USB-C
Protect:	IP54, IK07
Magnet:	2pcs N52 magnet in bottom

Net weight:	240g
Dimensions:	Head in low position: W: 45mm x D: 35mm x H: 158mm Head in top position: W: 45mm x D: 35mm x H: 92mm
Accessories:	USB-C cord Optional Wireless charging Pad (EHLW400) & 3-Pin USB-C Adaptor (EHLP1)
Operation Time:	Low: 200lm - 12 Hours Medium: 450lm - 6 Hours High: 900lm - 3 hours
Input:	Charger: 100-240Vac Lamp: 5V max. 1A

PART NO	DESCRIPTION	QTY
EHLW430	Wireless 900LM LED Adjustable Beam Torch	1
EHLW431	Wireless 900LM LED Adjustable Beam Torch + Wireless Charging Pad	1



ADJUSTABLE BEAM TORCH



THREE DIFFERENT BRIGHTNESS LEVELS



2X N52 SUPER STRONG MAGNET IN BASE FOR HANDS FREE USE



1500LM COB Work Lamp/Flex Light

The VISION Wireless 1500LM COB Work Lamp/Flex Light is the ultimate lighting solution for all your work and task-oriented needs. This versatile and powerful lamp is designed to provide you with reliable and adjustable illumination in any work environment.

With its COB lamp, the Work Lamp/Flex Light offers an impressive output of 15W/1500 lumens of bright white light. It provides three different lighting modes to suit your preferences and requirements: Low mode (300LM) offers an extended run time of 14 hours, Medium mode (800LM) lasts for 7.5 hours, and High mode (1500LM) delivers a powerful beam for 3.5 hours.

In addition to the COB lamp, the Flex Light features a 3W LED torch that emits 300 lumens of white light. The torch has a run time of 16 hours, ensuring a reliable and long-lasting light source when needed.

The Work Lamp/Flex Light comes with a PD 20W mains plug and PD 20W USB-C charging lead, allowing you to conveniently charge it from a mains power source or any standard USB power outlet. It also supports wireless charging, providing you with added flexibility and convenience.

With its integrated hook, the lamp/torch can be positioned at a multitude of angles, allowing you to direct the light exactly where you need it. The powerful rear magnet further enhances hands-free use, enabling you to securely attach the lamp to metal surfaces.

Whether you're working in construction, automotive repairs, or any other task-oriented setting, the VISION Wireless 1500LM COB Work Lamp/Flex Light is the perfect companion. Its bright and adjustable light output, long-lasting battery life, charging options, and convenient features make it an essential tool for any work environment.



Front light:	15W COB LED, 6500K CRI 80 Max.1500lm in flood beam
Top light:	3W LED, Max. 300lm 6500K
Battery type & parameter:	High quality 3.7V4400mAh Lithium battery
Charging time:	1.5hrs USB-C cord / 3hrs wireless
Charging port:	USB-C
Protection class:	IP65, IK08
Magnet:	2pcs N52 magnet in back
Net weight:	385g

Dimensions:	Folded: W: 76mm x D: 41mm x H: 170mm Opened: W: 45mm x D: 35mm x H: 340mm
Accessories:	USB-C cord Optional Wireless charging Pad (EHLW400) & 3-Pin USB-C Adaptor (EHLP1)
Operation Time:	Low: 300lm for 14hrs Medium: 800lm for 7.5hrs High: 1500lm for 3.5hrs Torch: 300lm for 16hrs
Input:	Charger: 100-240V AC Lamp: 5V Max. 2A
Output:	Charger:5V Max. 2000mA(not included)

PART NO	DESCRIPTION	QTY
EHLW440	Wireless 1500LM COB Work Lamp/Flex Light	1
EHLW441	Wireless 1500LM COB Work Lamp/Flex Light + Wireless Charging Pad	1



15W COB 1500 LUMENS BRIGHT WHITE LIGHT



360° INTEGRATED HOOK



N52 SUPER STRONG MAGNET IN BACK FOR HANDS FREE USE

